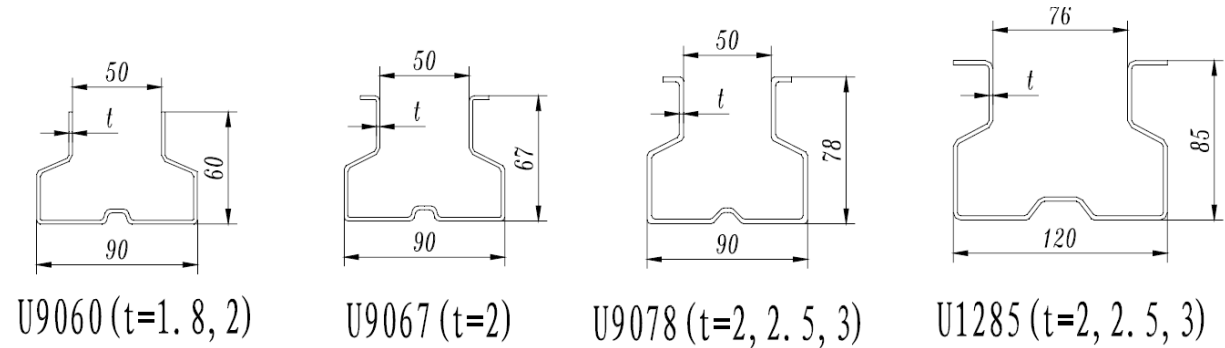
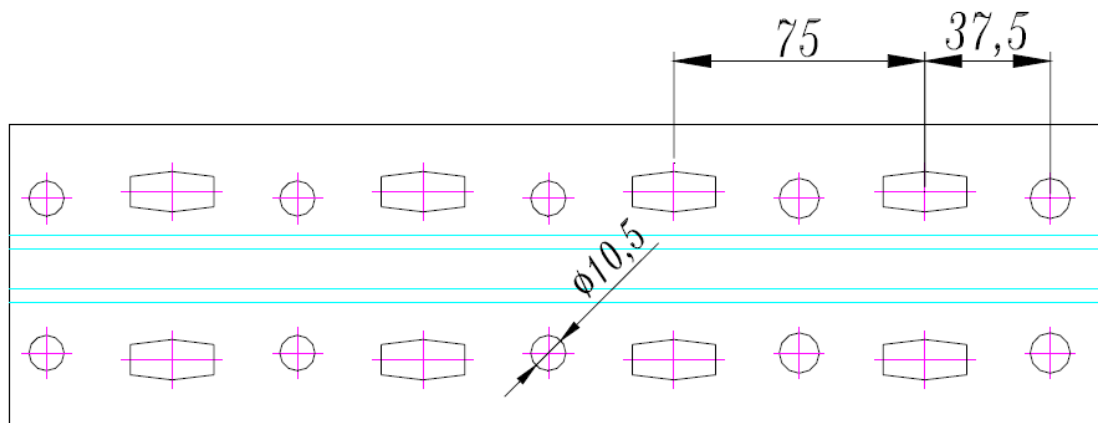


1. Frame

1.1 Upright Section Series



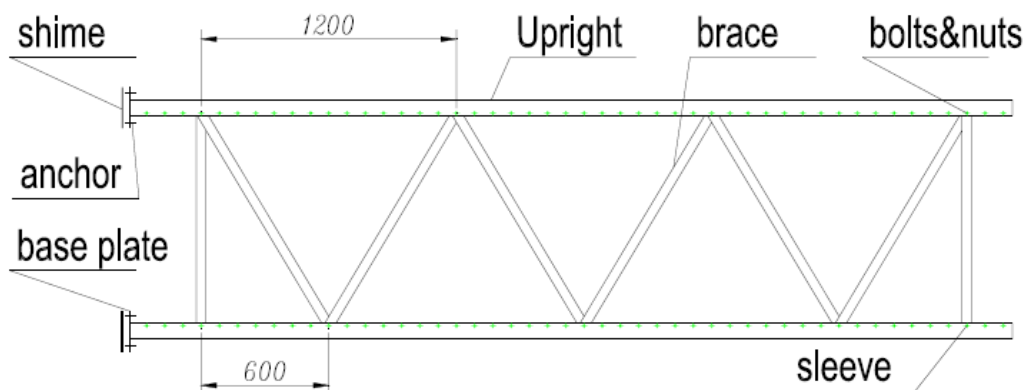
1.2 Slot Style (Frontal side)



NB! Upright length should be multiple of pitch (75 mm)

1.3 Frame assembly (See below drawings)

Consisted by: 1. Upright; 2. Brace; 3. Base plate; 4. Bolts, nuts; 5. Anchor; 6. Sleeve; 7. Shim



1.4 Components quantity per frame

Nr.	Components	Specification	Quantity / frame
1	Upright	According to design	2
2	Brace	According to design	Floor $((H-150) / 600) + 2$
3	Base plate	Standards	2
4	Bolts and Nuts	M10x65	Brace qty + 3
5	Anchor	M10x75	4
6	Sleeve	Standards	2
7	Shim	Standards	1

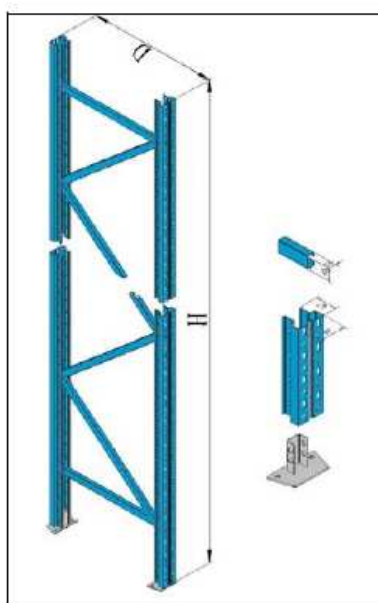
Attention!

H – Height of frame

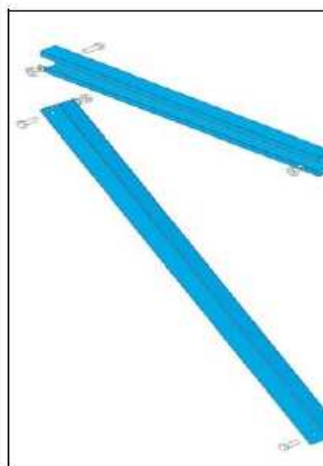
Example calculations: If H=6000 mm

$$\text{Brace qty} = \text{Floor} \left(\frac{6000-150}{600} \right) + 2 = \text{Floor}(9,75) + 2 = 9 + 2 = 11$$

Brace section size: For U1285 upright: 55x37,5x1,5
For all other uprights: 40x24x1,5



Frame



brace



bolts & nuts



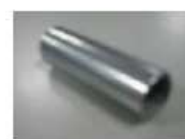
Base plate



shim



anchor



sleeve